

Ngā Kawekawe o Mate Korona | Impacts of COVID-19 in Aotearoa

Summary of some key Results and Recommendations

Dr Mona Jeffreys and Dr Lynne Russell

Te Hikuwai Rangahau Hauora | Health Services Research Centre

Te Herenga Waka-Victoria University of Wellington



IMPACTS OF COVID-19 IN AOTEAROA
NGĀ KAWEKawe O MATE KORONA

Background



- Feb 2021: Manatū Hauora | Ministry of Health announced RFP
- Apr 2021: Announced
- May 2021: Submitted (2,500 people with COVID-19, 200 TW)
- July 2021: Awarded
- 17th August 2021: Study began **August Delta Outbreak**
- 30th Nov 2021: End of inclusion criteria (8,735 people with COVID-19, >2,500 TW)

Methods



IMPACTS OF COVID-19 IN AOTEAROA
NGĀ KAWEKAWE O MATE KORONA

- Eligibility criteria
 - Had COVID-19 before Dec 2021
 - Aged 16 or over
 - Not living in dementia unit
- Sent invitation letter via MOH (Feb 2021)
 - Two reminder SMS via MOH
 - Media and social media coverage
- Four online surveys
 - Support and wellbeing
 - Health and health services
 - Costs of COVID
 - Long COVID
- In-depth interviews
 - Māori, Pacific peoples, disabled people, infected at work, family groups



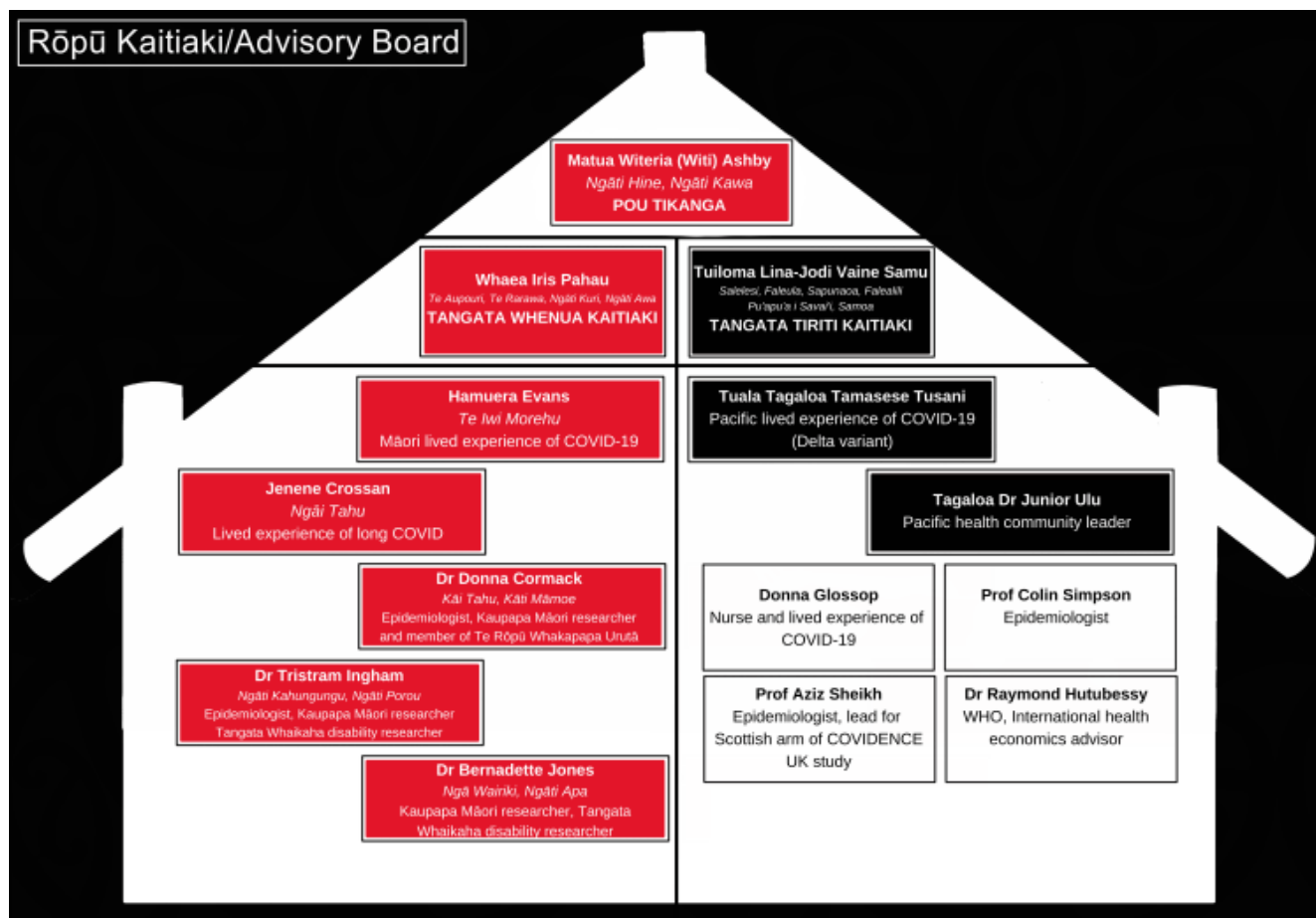
Te Tiriti Relationship Framework



IMPACTS OF COVID-19 IN AOTEAROA
NGĀ KAWEKAWE O MATE KORONA

- Shared leadership and equal membership of Tāngata Whenua and Tāngata Tiriti
- A co-operative and shared relationship
- Acknowledgement of the place of Tāngata Whenua perspectives in decision-making through key values and beliefs from Te Ao Māori
- Strategies, tikanga, policies, procedures, kawa and practices that reflected a two-world view, woven into the relationship
- Collective decision-making that operated on consensus rather than a voting system

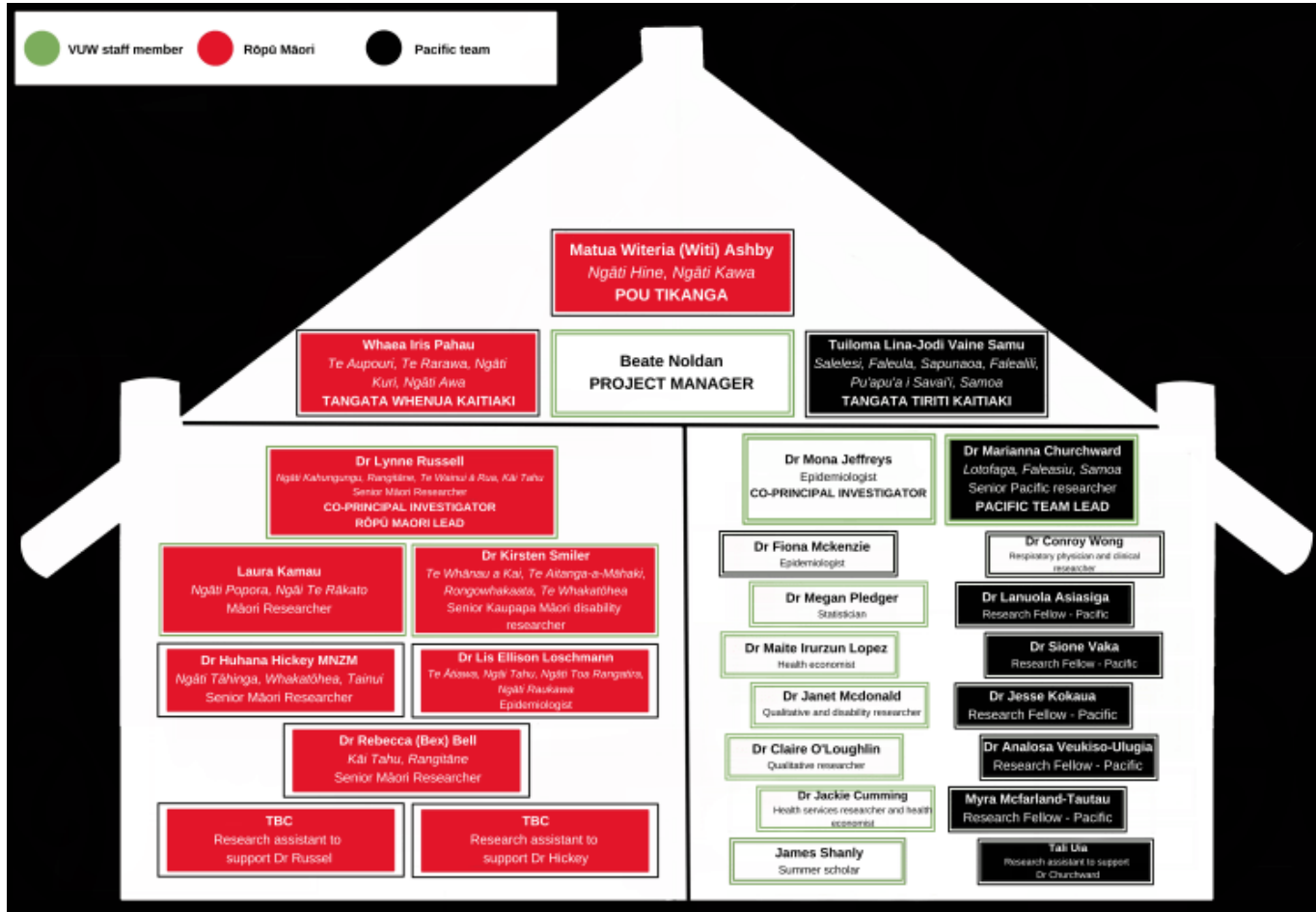
Rōpū Kaitiaki



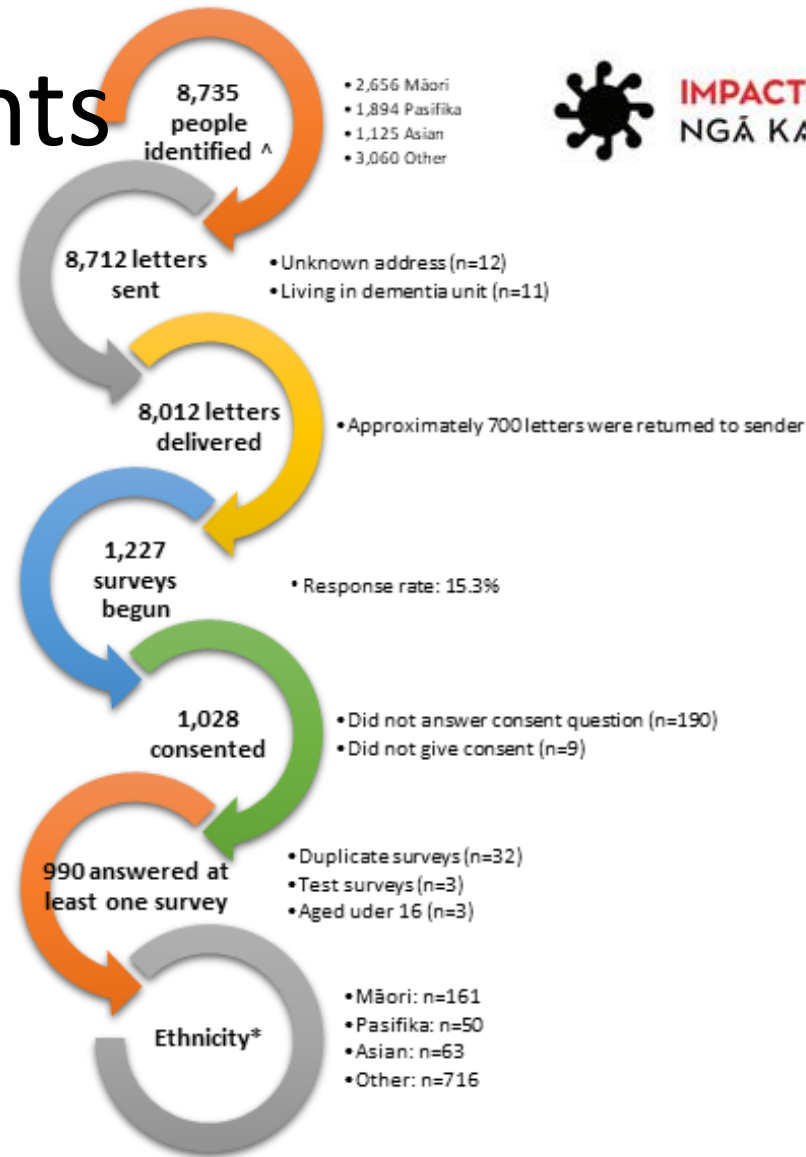
Rōpū Rangahau



IMPACTS OF COVID-19 IN AOTEAROA
NGĀ KAWEKAWE O MATE KORONA



Participants



IMPACTS OF COVID-19 IN AOTEAROA
NGĀ KAWEKAWE O MATE KORONA